

COMPLETE LIQUIDATION OF COUNTRY PRIDE COOPERATIVE'S  
C-STORE - CAR WASH FACILITY - REPAIR SHOP - INVENTORY - BUILDINGS TO BE MOVED

# ON-LINE ONLY AUCTION

Monday, March 1, 2021 - Auction begins to close at 6:00 P.M.

**LOCATION:** 251 First Avenue Windom, Minnesota.

The junction of highways #71 & #60 in Windom, Minnesota just east of Hardees.

## INSPECTION DATES & TIMES

Inspection of all items will be held on Thursday through Saturday, February 25th - 27th. On Thursday & Friday from 10:00 A.M. to 4:00 P.M. & on Saturday from 9:00 A.M. to Noon and again on Monday, March 1st from 10:00 A.M. to 4:00 P.M.

## ITEM PICKUP & REMOVAL TIMES

For all C-Store items, Shop equipment, New tires & Inventory items - These items must be picked up starting Tuesday, March 2nd through Friday, March 5th from 9:00 A.M. to 4:00 & Saturday, March 6th from 9:00 A.M. to NOON. All items are buyers responsibility upon purchase on 3/1/21. Please get your items picked up right away! Items not picked up in mentioned time frame will be forfeited.

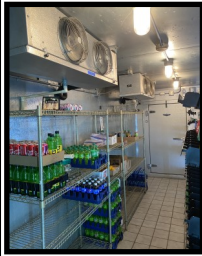
For items in Car Wash, Buildings & Fixtures Categories - Most all of these items cannot be removed/pickup until Monday, March 8, 2021 at 9:00 A.M. and must be completely removed not later than April 15, 2021, but are the buyers responsibility upon purchase on 3/1/21. See individual lot listings for additional information and requirements.

For those wishing to bid they must register by going to [www.danpikeauction.hibid.com](http://www.danpikeauction.hibid.com)  
10% Buyer Premium applies to all items purchased.

### C-STORE ITEMS - SHOP EQUIPMENT



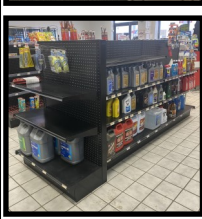
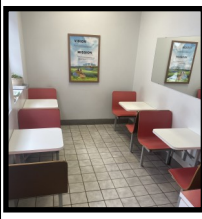
**C-STORE ITEMS:** US Cooler self-contained walk-in cooler/freezer system with freezer unit approx. 7' x 8' and has BOHN freezer unit, ser. #37902 and the Walk-in cooler unit approx. 19' wide x 7' deep w/ 6 glass front display door, also includes 1-6 section beverage display rack & 1-approx. 10' in cooler storage rack; Commercial stainless steel 40"x26" sink; F'Real malt & shake blender unit w/ glass front freezer display unit; Slammer pizza warmer display cabinet; Pizza warming display rack; Star Grill-Max hot dog roller grills; Convenience store drink counter/cabinet; 4 - 2 person café booths; Stainless steel top prep table; Assorted store display shelving & racks; Assorted trash cans; U-shaped convenience store cashiers counter; Assorted tobacco displays; Assorted kitchen equipment; Kitchen appliances; Assorted shelving & racks; EnMotion paper towel dispenser; Many other items.



### C-STORE ITEMS

LOCATED IN MT. LAKE, MN.  
To view these items ahead of the auction an appointment will need to be made with either Kevin Jackson or Tom Mryvold @ 507-831-2580

Crown Tonka walk-in cooler/freezer unit w/ Larkin freezer unit & Climate Control Heatcraft LSC120AS1 cooler units, 8 glass cooler display doors & 1 glass freezer display door; Taylor 168-27 self serve ice cream machine, 220 volt, ser. #J9012799; Leer Manufacturing IJF-0161 ice freezer w/ glass front display door; 3 - Commercial stainless steel sinks; 1 - 2 person café booth; Commercial wall mounted SS 3 shelf; Assorted shelving.



**SHOP EQUIPMENT:** Wheeltronic, Inc. model #14 alignment rack, not complete no controls, rack only; Coats X Series 70X-EF-3 rim clamp tire machine; Robenair Enviro charge refrigerant recycling system; Metal tire storage rack 4 sections 40"x 4 levels w/ metal stairway, walkways & attached lighting; Several wooden tire storage racks; Assorted metal & wood storage shelving; Assorted air tools - impact wrenches, sockets, etc.; Large amount of assorted hand & specialty repair automotive tools; Floor jacks; Drill press; Shop benches; Assorted parts for vehicles, trucks, trailers & more; Hunter alignment equipment; RTI multi-coolant exchanger; Century wire welder; Assorted shop manuals; and other items to numerous to mention.

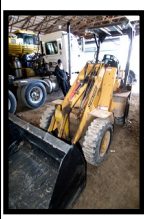
### OFFICE EQUIPMENT & SIGNS

2 - Portable safes (1 is very old J. Baum Safe & Lock Co. with Standard Oil Company on door; Several assorted signs both metal & wooden; Assorted exterior & interior doors; Assorted folding table; New folding chairs; and Many other items.



### PICKUPS - PAYLOADER - FORKLIFT

1997 Ford F-350 4x4 dually regular cab pickup w/ 9' x 6'3" aluminum stake bed with 12" removable sides, 460 V-8 engine, Auto. trans., 125,xxx indicated miles; 1991 Dodge LE Power Ram 150 4x4 pickup w/ V-8, reg. cab & auto. trans.; 1998 NMC Swinger Hydro 2000 mini 4x4 payloader w/ diesel engine, bucket, ROPS, Ser. #1206; Towmotor T50 hard surface forklift w/ 4,800 lb. basic cap., LP gas engine & side shift.



### NEW TIRES & IVENTORY ITEMS



Large inventory of approximately 500 to 700 new tires of all types for vehicles, trailers, trucks, tractors and other items; Assorted new & used tire rims; Assorted new tire innertubes.

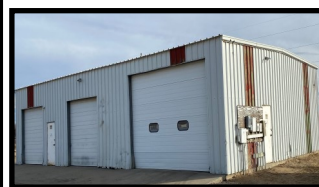


### COMPLETE LINE OF CAR WASH EQUIPMENT

Oasis XP automatic car wash system; Unitech Portal TI commercial cashier box system; Futura pumping stations for car wash bays; 6 - Polycarbonate car wash doors w/ magna glide lifts & air controls (2- 12'x14' & 4- 10'x10'); Futura Soap/wax dispenser; Dultmier Presoak & foam brush systems; Auto. Car dryer system w/ 5 - 10 hp. Blowers; 4 - ceiling mounted bay wand systems w/ foam brushes; Commercial Kinetico water softener system; Commercial RO wash water system; 4 - Takagi on demand hot water heaters; 4 - Commercial vacuums; Assorted electronic car wash signs & menu boards; Automatic car wash traffic gate; Assorted car wash product dispensers; Hamilton wall mounted change machine; 4 - Cryptopay wall mounted payment systems w/ cash & credit card readers; 3 - Re-Verber-Ray 30' LP tube heating units; Teledyne Laars floor boiler heating system; Futura bulk water dispenser w/ hose; Commercial glass lobby door 11'4"x7'4"; 2 - Commercial glass doors 36"x7'4"; Assorted car wash parts and other items to numerous to mention.

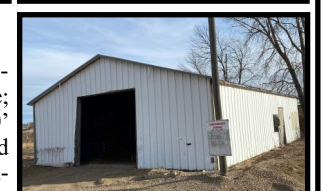


### BUILDINGS TO BE MOVED & FIXTURES



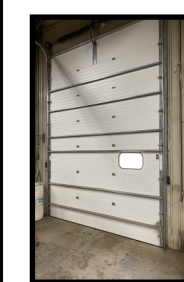
### BUILDINGS

Fuel pump canopy approximately 58' x 92' w/ 14' clearance; Storage/shop building 40' x 60' w/13' side walls, 3 overhead doors, & red steel frame construction; Warehouse/storage building 40' x 98' w/ 9'8" side walls & steel frame construction; Storage building 32' x 48' w/ 10' side walls, no door & red steel frame construction; 9' x 22' platform scale w/ 30,000 lb. Fairbank-Morse bar scale & scale shed; 6' x 10' wooden storage shed



### FUEL EQUIPMENT & OTHER FIXTURES

Highway post sign w/ lighted fuel prices & Cenex sign panels; 9 - fuel dispensers w/ card readers (4 - diesel & 5 gas); Veeder-Root TLS-350 fuel tank monitory system; 4 - under ground in tank commercial fuel pumps (2-diesel & 2-gas); 3- insulated commercial overhead shop doors w/ openers 12'x14'; Reznor LP shop hanging heats; Assorted fluorescent light fixtures; Shop ceiling fans; Hydraulic reservoir & pump for shop hoist; Hot water heaters; Rheem & Lennex Pulse 21 LP & Bard furnaces w/ central AC units; Large commercial LP gas meter; Cyber power Intelligent backup power system; and Many other items.



### SPECIAL NOTE FOR ITEMS IN CAR WASH EQUIPMENT, BUILDINGS, FUEL EQUIPMENT & FIXTURES CATEGORIES

Most all of these items that are being offered in these categories will not be available to be picked up/removed from the property until Monday March 8, 2021 at 9:00 A.M., but must be removed not later than April 15, 2021. Any items not removed by then will be forfeited with the sellers having the right to dispose of them without notice or recourse by the buyer. Any buyers of building structures will be required to provide to the seller proof of at least a 2 million dollars of liability insurance coverage prior to beginning to remove any structures/buildings.

## COUNTRY PRIDE COOPERATIVE

For more information contact either Kevin Jackson at 507-831-2580 or Tom Mryvold at 507-822-1165

SALE CONDUCTED BY **DAN PIKE AND ASSOCIATES AUCTION CO.** COMPLETE PROFESSIONAL AUCTION SERVICES

OFFICE  
410 Springfield Parkway  
Jackson, MN. 56143  
507-847-3468  
[www.danpikeauction.com](http://www.danpikeauction.com)

**AUCTION TERMS:** All buyers will be required to register with a valid credit card that will be used for the payment/settlement of all purchases immediately upon the closing of the auction. A 10% buyers premium will be added to all purchases. Minnesota state sale tax will be charged on all inventory and other items that require sales tax to be charged pursuant to the Minnesota sales tax laws. Buyers are responsible for inspection of items prior to purchase and all items are being sold AS IS. Items must be removed/pickup within the scheduled time frames. If buyers do not remove items from the property within the scheduled time frames the buyers forfeit any and all rights to those items and the sellers reserves the right to dispose or resell the items at sellers discretion and buyer loses all rights to the items or compensation from seller. Buyers are responsible for all items upon purchase on 3/1/21. Auction company not responsible for any technical difficulty or disruption in bidding. All sale are final. Seller & Auction Company not responsible for accidents before, during or after the auction.